

Using a Database with Legitronic Labeling Software Version 3.5

Would you like to take advantage of the ODBC linking capabilities of Legitronic Labeling Software? This paper shows how you can do just that. We'll use the same database and the same label in two ways: first to create an *on demand* mailing label, and second, to create a *dump* of all addresses in the database onto labels. For simplicity, we'll use a Microsoft Office Access 2003 database that has one table containing fields for Name, Street1, Street2 Street3, City, State and Zip Code. Follow along and we'll show you how it's done.

Please note that designing, creating, population and maintaining any database is outside the scope of both this document, and Weber's Labeling Systems support parameters.

1. Create a database using a structure like that in Figure 1

| tblNameAddy : Table | | | | | | | | |
|---------------------|-------------------|--------------------|-----------|---------|-----------|-------|-------|--|
| ID | Name | Street1 | Street2 | Street3 | City | State | Zip | |
| 1 | Acme Supplies | 123 Elm Street | | | Anytown | IL | 60606 | |
| 2 | My Favorite Place | 1 Main Street | Suite 101 | | Righthere | CA | 80123 | |
| 3 | Best Wishes Cards | 78N. 127 E. Hwy 11 | Blgd 3 | Door 7 | Happiness | WI | 54921 | |
| 4 | I Want Candy | 24 Sweetness Lane | | | Peyton | VA | 01689 | |
| * | (AutoNumber) | | | | | | | |

Figure 1

2. Use the Microsoft Windows ODBC Data Source Administrator to create a link to this database.
3. Name the Data Source something meaningful. (Figure 2)

Note: If you need help with this function, refer to the paper titled. "Using an ODBC Database with Legitronic Labeling Software 3.X".

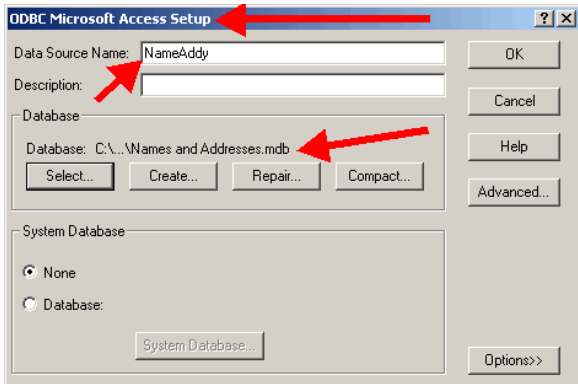


Figure 2

4. Open the Legitronic Labeling Software.
5. Create a new blank label.

6. Add a Text Field and display its Properties dialog box.
 7. Give the Text Field a meaningful name.
 8. Click on the Data tab. (Figure 3)
 9. Choose an Expression Type of Supplied Input. (Figure 3)
 10. Choose Table Lookup as the Data Source. (Figure 3)
 11. Add a Prompt of your choosing. (Figure 3)
 12. Choose one of the names from the database for the Default Data. (Figure 3)
- Click the Table Lookup button. (Figure 3)

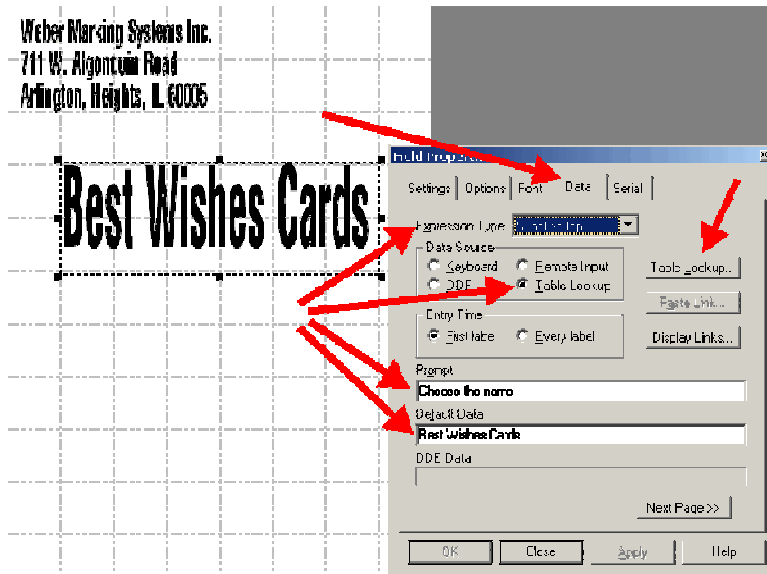


Figure 3

13. Choose the Data Source name from the pull down menu. (Figure 4)
 14. Choose the Table name from the pull down menu. (Figure 4)
 15. Choose the Table Column name from the pull down menu. (Figure 4)
- Optional:** Choose the Table Column to Use as Prompt from the pull down menu.

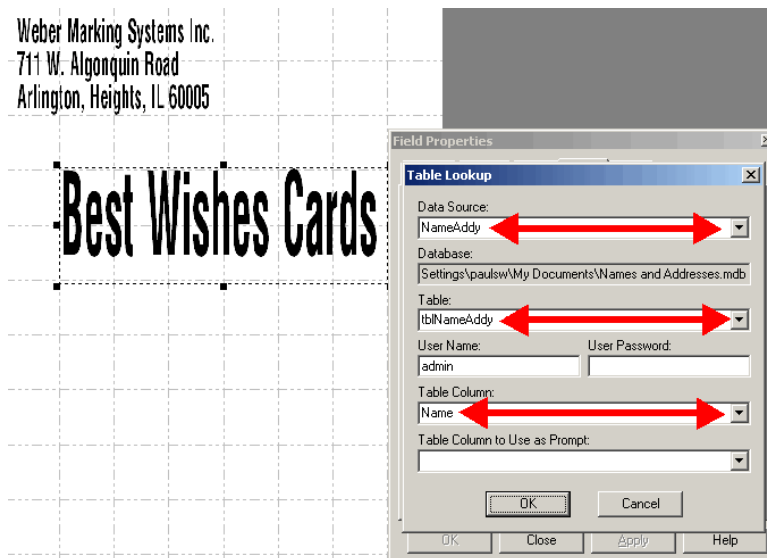


Figure 4

- 16. Click OK
- 17. Right-click on the field you just created and choose Duplicate from the quick-pick menu. (Figure 5)
TIP: Using the duplicate feature can be a real time saver. It brings all the attributes from the source field so you only need to change the ones that are different.

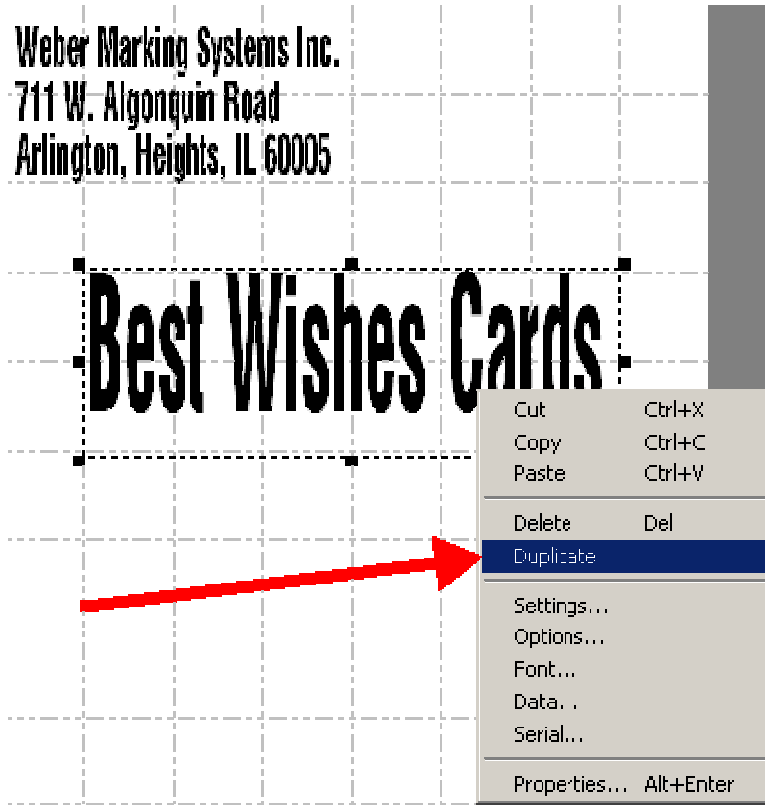


Figure 5

- 18. Name the field something meaningful. (Figure 6)
- 19. Change to the Data tab. (Figure 6)



Figure 6

20. Change the Expression Type from Supplied Input to Database. (Figure 7)
21. Choose the Data Source name from the pull down menu. (Figure 7)
22. Choose the Table name from the pull down menu. (Figure 7)
23. Choose the Search Column name (in this case Name) from the pull down menu. (Figure 7)
24. Choose the Return Column name (in this case Street1) from the pull down menu. (Figure 7)
25. Choose the Key Field on Label name (in this case Name) from the pull down menu. (Figure 7)

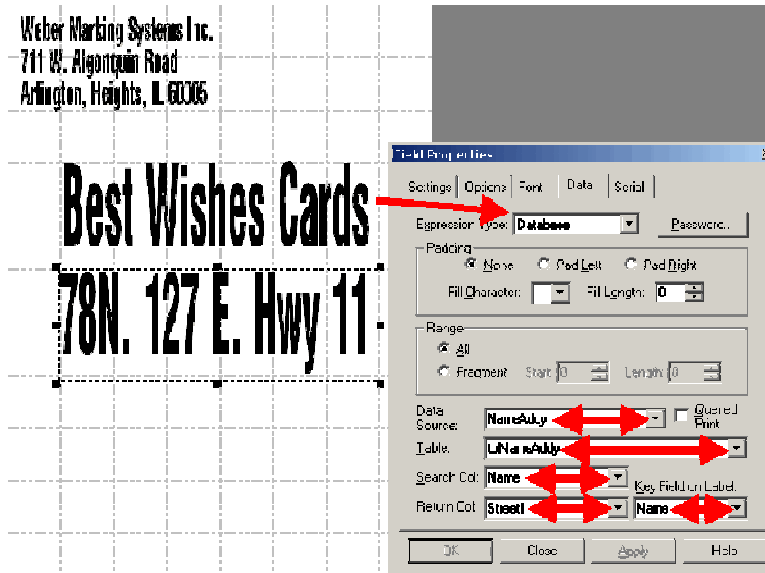


Figure 7

26. Click Close
27. Repeat steps 18, 19, 20, 25 and 26 until you have one text field for every database field.
When you're finished your label should look similar to Figure 8.



Figure 8

28. Save and Close the label.
29. Open the label for printing.
30. Choose the name you want to print the label for from the list. (Figure 9)

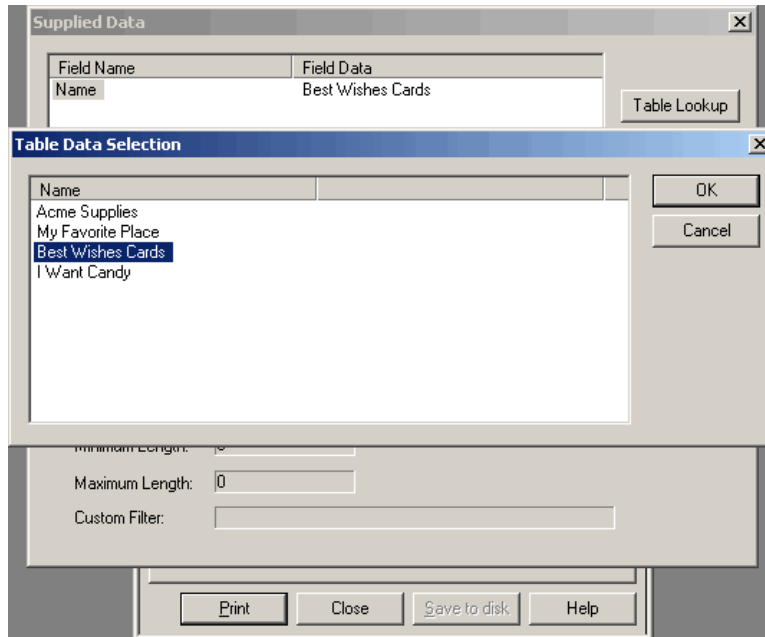


Figure 9

You have just printed an address label from your database, *On Demand*. If you want to automatically print one label for each entry in your database, go to the next page to learn how to print a *Data Dump*.

31. Click File ► Open Label for Design.
32. Choose the label you created in the previous steps.
33. Save the label under a new name. (Figure 10)

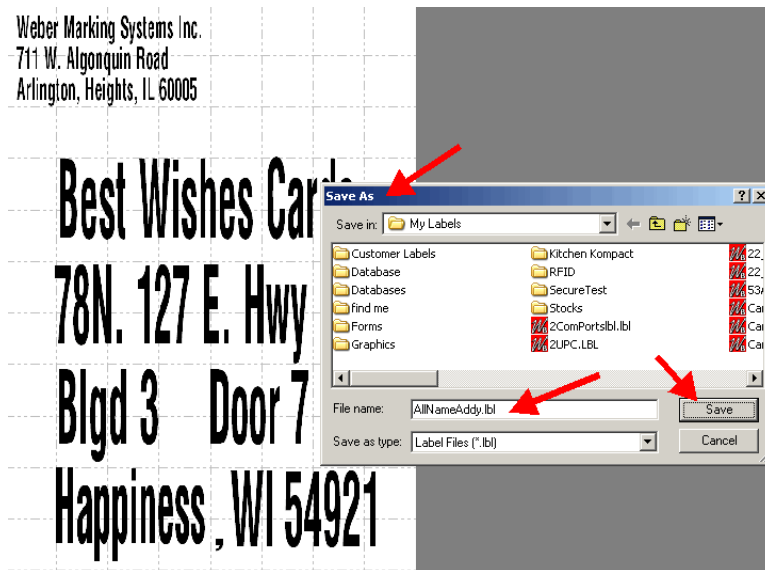


Figure 10

34. Open the Name field properties.
35. Choose the Data tab.
36. Change the Expression Type to Database. (Figure 11)
37. Choose the Data Source name from the pull down menu. (Figure 11)



Figure 11

- 38. Click on the Queried Print box (Adds a Check Mark). (Figure 12)
- 39. Choose the Table name from the pull down menu. (Figure 12)

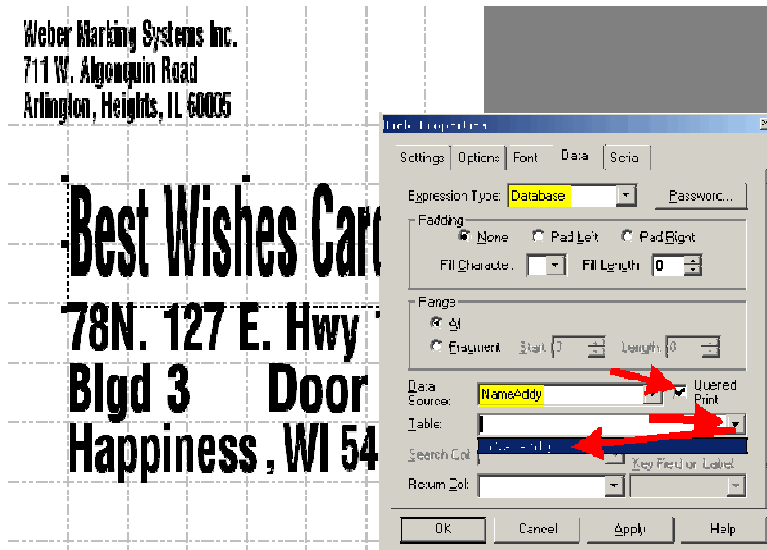


Figure 12

- 40. Choose the Return Column name (in this case Name) from the pull down menu. (Figure 13)

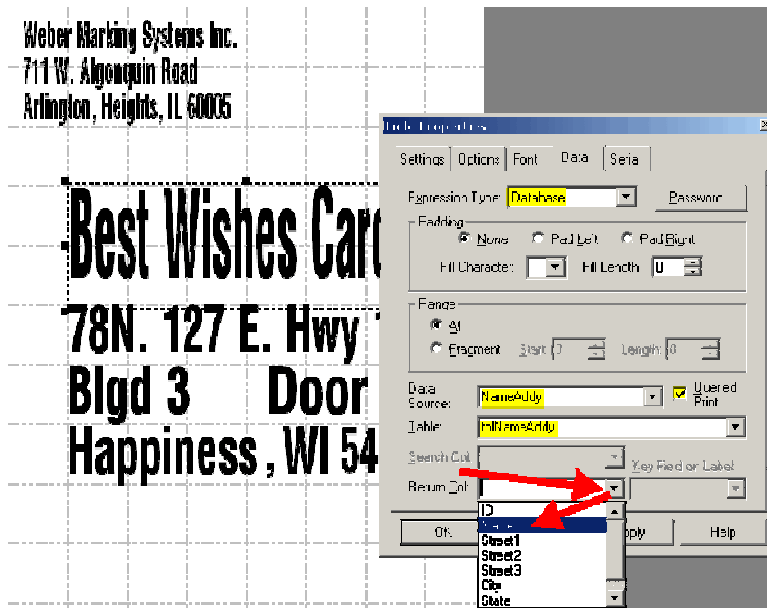


Figure 13

41. Click on the Serial tab. (Figure 14)
42. Click on the This Field Determines the Number of Identical Labels Printed box (Adds a Check Mark). (Figure 14)
43. Click OK



Figure 14

Your label should look similar to Figure 15.

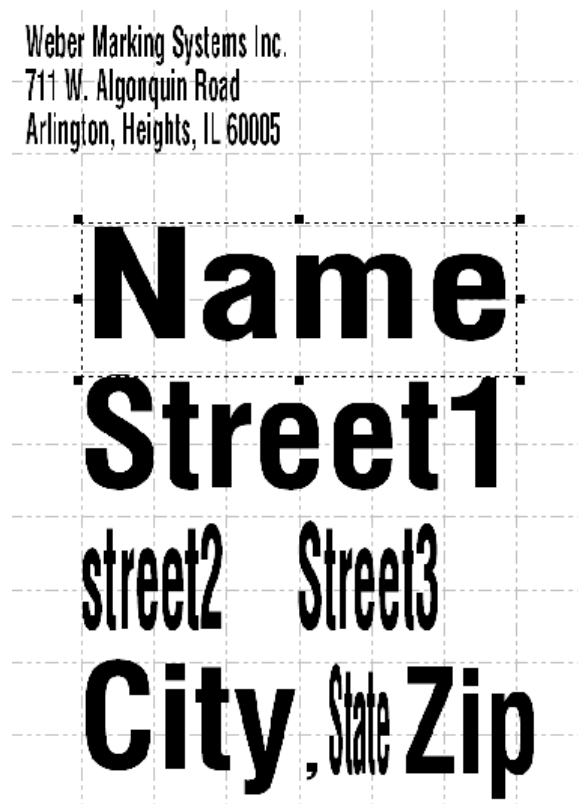


Figure 15

- 44. Save and Close the label.
- 45. Open the label for printing.

One label for every record in the database will print.

Weber Marking Systems Inc.
711 W. Algonquin Road
Arlington, Heights, IL 60005

Acme Supplies
123 Elm Street

Anytown, IL 60606

Weber Marking Systems Inc.
711 W. Algonquin Road
Arlington, Heights, IL 60005

My Favorite Place
1 Main Street
Suite 101
Righthere, CA 80123

Weber Marking Systems Inc.
711 W. Algonquin Road
Arlington, Heights, IL 60005

Best Wishes Cards
78N. 127 E. Hwy 11
Blgd 3 Door 7
Happiness, WI 54921

Weber Marking Systems Inc.
711 W. Algonquin Road
Arlington, Heights, IL 60005

I Want Candy
24 Sweetness Lane

Peyton, VA 01689

If you have any questions regarding this document contact Labeling Systems Product Support at 847.364.8500 ext. 773