

Using a Database with Legitronic Labeling Software

User Manual

Copyright © 2006 Weber Packaging Solutions, Inc.

Legitronic is a registered trademark of Weber Packaging Solutions, Inc.

This program or documentation contains confidential information and trade secrets of Weber Packaging Solutions, Inc. and its suppliers.

Reverse engineering of object code prohibited.

Version 3.6.X

Weber Packaging Solutions, Inc.
711 W. Algonquin Road
Arlington Heights, IL 60005-4457
Phone: 847-364-8500 Fax: 847-364-8575
www.weberpackaging.com
(P) December 2009

1.	INTRODUCTION	3
	HOW THIS GUIDE IS ORGANIZED.....	3
	CONVENTIONS USED IN THIS GUIDE	4
	LEGITRONIC SUPPORT	4
2.	USING A DATABASE WITH YOUR LABELS	5
	Data Type.....	5
	Database.....	5
	OLE DB Database Support	7
3.	QUERIED PRINTING	11
	Label Properties — Queried Tab.....	11
	Field Properties — Data Tab.....	13
	Print Label — Queried Tab.....	14

1. Introduction

Welcome to the *Using a Database with Legitronic Labeling Software User Guide*. This guide provides an overview of Legitronic's database access features, describes its windows and dialog boxes, and explains how to use its functions. Before you begin using the functions shown in this guide you should already be familiar with using Legitronic Labeling Software. If this is not the case, STOP, and read through the full Legitronic User Guide included on the CD your labeling software came on. You can download an abridged version of the User Guide titled, *Using Legitronic 3.6.2 to Design and Print Labels* at www.weberpackaging.com/legitronic-software-faqs.html.

How This Guide Is Organized

This guide contains three chapters

- **Chapter 1, Introduction**, contains the conventions used in this guide, and where you can get help.
 - **Chapter 2, Using a Database with Your Labels**, explains how to configure Legitronic to populate individual fields using a database.
 - **Chapter 3, Queried Printing**, explains how to print one or more labels for each item in a database table.
-

Conventions Used In This Guide

The table below explains how this guide uses type as visual cues to certain Legitronic components, special keying techniques, or documentation conventions.

This	Represents
SMALL CAPITAL LETTERS	Keys on your keyboard, such as the ENTER key or the ALT key.
<i>italic</i>	Emphasized words and variables (names used to represent data items whose value can change).
<i>Italic</i>	Menus and menu options. The shortcut key is underlined. For example, the <u>T</u> ools menu can be selected by pressing ALT+T.
<i>Italic</i> → <u>Italic</u>	A sequence of menu selections that can be used to open a window or dialog box. For example, <u>F</u> ile → <u>N</u> ew means “click the <u>F</u> ile menu and select the <u>N</u> ew option.” Using the keyboard, you would press ALT+F and then N.
<u>Command</u>	Command buttons in dialog boxes. For example, OK, Cancel, and <u>H</u> elp. The underlined letter on a button label identifies the shortcut key used in conjunction with the ALT key. For example, pressing ALT+H is the same as clicking the <u>H</u> elp command button.

Note: This guide includes sample displays of representative data that will not exactly match specific data displayed on your screen.

Legitronic Support

For Legitronic technical support, call 847-364-8500 (ext. 773) between the hours of 8:00 AM and 4:30 PM, Monday through Friday. You can reach us via email at legi@webermarking.com. Additionally, there is a wealth of information located at http://www.webermarking.com/software_faqs.html.

For hardware-related problems, call 847-364-8500 (ext. 776).

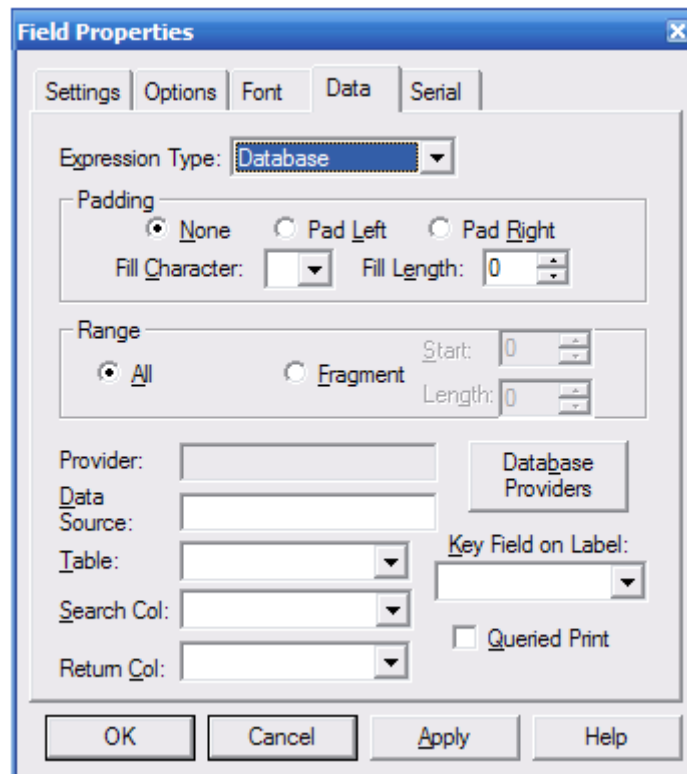
2. Using a Database with your Labels

Data Type

This section describes the controls for the Database data type available on the Data tab of the Field Properties dialog box.

Database

Database fields allow you to obtain field data from a selected database.



Specification	Description
Padding	Type of padding desired when the field content is shorter than the length specified in the Fill Length field – none, pad left, or pad right
Fill <u>C</u> haracter	Character to be used to pad the field
Fill <u>L</u> ength	The maximum allowable length of the field
<u>F</u> ragment	You can specify a start position and maximum length for the field
<u>S</u> tart	The position at which the data should begin
Length	The maximum length of the field
<u>Q</u> ueried Print	When checked, the field will get its data from the data source identified below (See Chapter 3)
Datab <u>a</u> se Providers	Launches the Data Link tool for establishing a connection to the Print Log database
<u>D</u> ata Source	Shows the data source selected using the Data Link tool
<u>T</u> able	Name of the table that contains the data you want to use
<u>S</u> earch Col	The database column to be searched for the appropriate record
Return <u>C</u> ol	The database field in the selected record that contains the data to be used in the label field
<u>K</u> ey Field on Label	The label field that contains the data used to select the database record

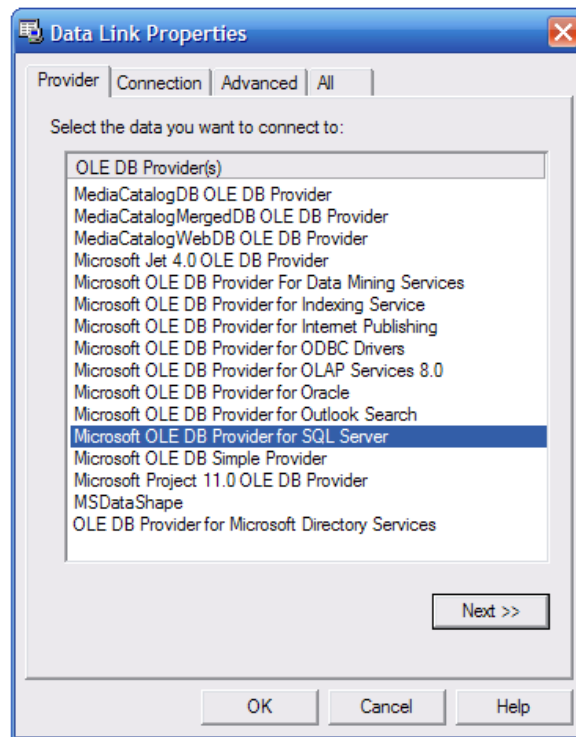
OLE DB Database Support

OLE DB is the most direct and reliable method for database connectivity today. Developed by Microsoft, OLE DB is a set of interfaces that expose data from a variety of diverse information sources. OLE DB enables Legitronic to connect to a wider variety of data sources than ODBC. OLE DB also enables Legitronic to connect to Unicode data sources to provide multi-lingual label printing. Legitronic continues to provide support for ODBC as well.

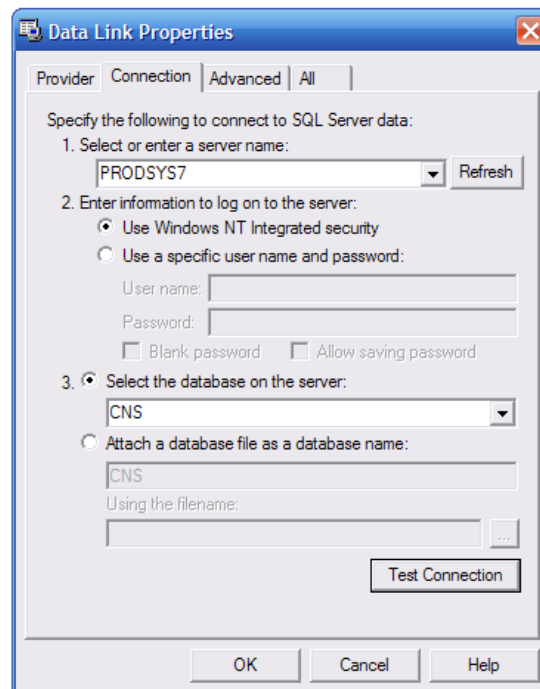
The Database Field Properties page now includes a Database Providers button to start the Data Link tool.

The screenshot shows the 'Field Properties' dialog box with the 'Data' tab selected. The 'Expression Type' is set to 'Database'. The 'Padding' section has 'None' selected. The 'Range' section has 'All' selected. The 'Provider' field is empty, and the 'Database Providers' button is visible. The 'Data Source' field is empty. The 'Table' field is empty. The 'Search Col' field is empty. The 'Return Col' field is empty. The 'Key Field on Label' field is empty. The 'Queried Print' checkbox is unchecked. The 'OK', 'Cancel', 'Apply', and 'Help' buttons are at the bottom.

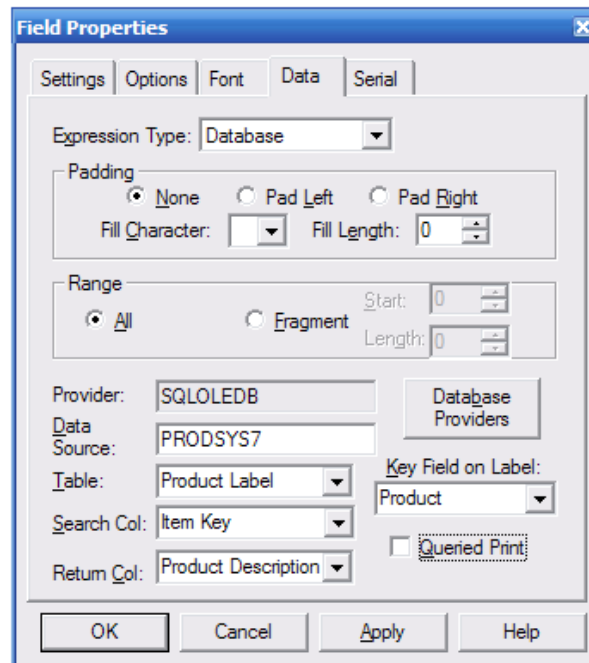
Use the Data Link tool to select the database provider for the target database. Many database providers are included and others are available from database application publishers.



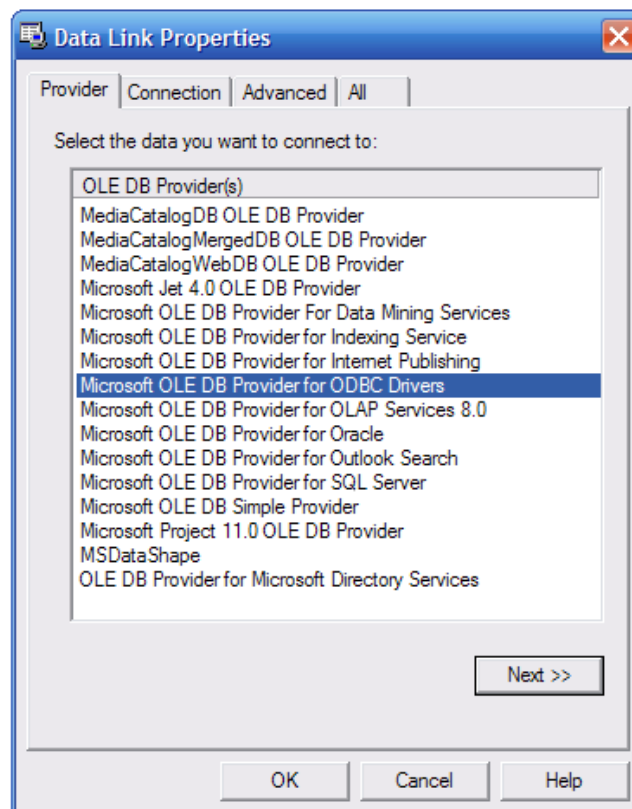
Click the Connection tab to select the database server and the database located on the selected server.

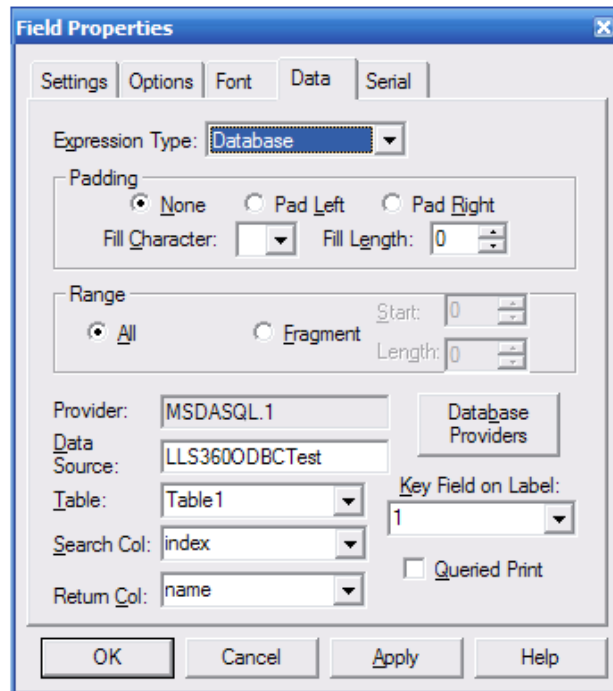


Click OK to return to the Field Properties tab and continue creating the database look-up field.

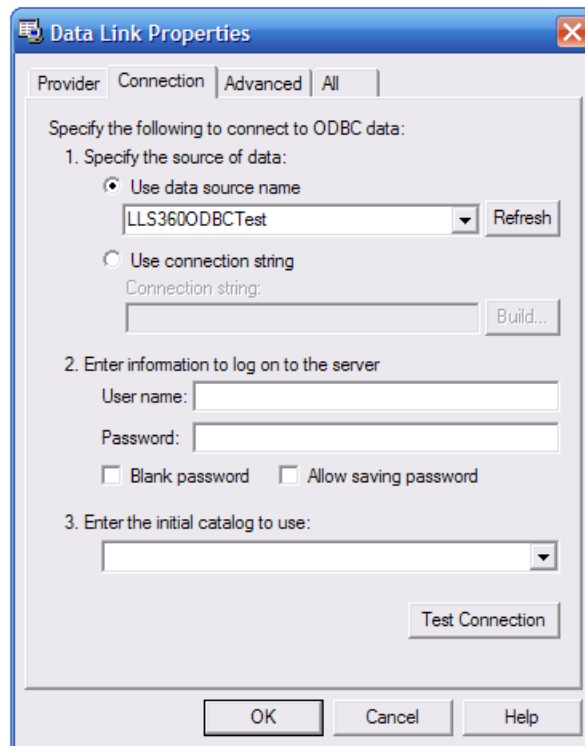


To establish an ODBC connection, select the provider shown below.





Next, select the data source name (DSN) previously setup using Windows' ODBC manager facility (covered in the *Legitronic User Guide*). Click OK to proceed.



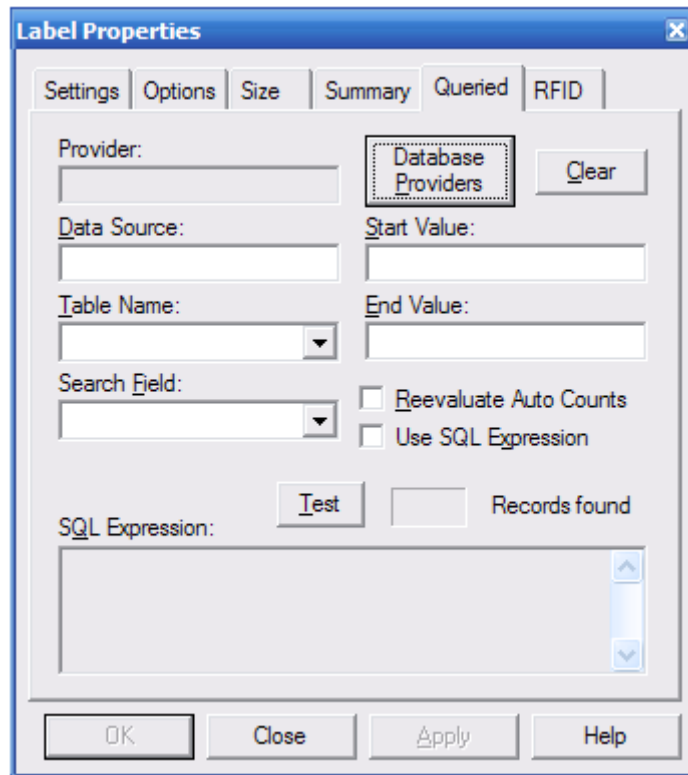
The Provider and DSN are now established and the remaining field information can be specified.

3. Queried Printing

Queried printing allows you to print one or more labels for each record in a given table of your database. In addition to the process outlined in Chapter 2, you will need to perform these steps

Label Properties — Queried Tab

This is the same Label Properties dialog box use used when you initially set up your label.



Specification	Description
Database <u>P</u> roviders	Launches the Data Link tool for establishing a connection to the database
<u>C</u> lear	Clears data entered on the tab
<u>D</u> ata Source	Shows the data source selected using the Data Link tool.
<u>T</u> able Name	Name of the table that contains the data you want to use
Search <u>F</u> ield	The field in the table to search for particular values
<u>S</u> tart Value	The first value for which a label should be printed
<u>E</u> nd Value	The last value for which a label should be printed
Use SQL <u>E</u> xpression	When checked, the SQL expression entered in the SQL Expression box is used to select labels for printing. If this field is checked when start and end values have been specified, those values are converted to an SQL expression.
<u>R</u> eevaluate Auto Counts	When checked, the field value is re-evaluated for every database record. Otherwise, the value for the first database record is used for all labels printed.
SQL <u>E</u> xpression	The SQL expression that will be used to select labels for printing
Test Button	Tests the query and returns the number of records found.

Field Properties — Data Tab

The screenshot shows the 'Field Properties' dialog box with the 'Data' tab selected. The 'Expression Type' is set to 'Database'. Under 'Padding', 'None' is selected. Under 'Range', 'All' is selected. The 'Provider' is 'MSDASQL', 'Data Source' is 'AEP Wax Labels', and 'Table' is 'Labels Database'. The 'Search Col' is 'C' and 'Return Col' is 'Product Form'. The 'Queried Print' checkbox is checked. The 'Search Col' and 'Key Field on Label' controls are grayed out.

Check the Queried Print option on the database field property page **OF THE KEY FIELD ON THE LABEL**. The Search Column and the Key Field on Label controls will become deactivated (grayed out). The remaining database fields will remain as they were set up in Chapter 2.

Print Label — Queried Tab

A mirror of the Label Properties – Queried Tab exists in the label print dialog page. You can make changes to individual print jobs here.

Specification	Description
Database <u>P</u> roviders	Launches the Data Link tool for establishing a connection to the database
<u>D</u> ata Source	Shows the data source selected using the Data Link tool.
<u>T</u> able Name	Name of the table that contains the data you want to use
Search <u>F</u> ield	The field in the table to search for particular values
<u>S</u> tart Value	The first value for which a label should be printed
<u>E</u> nd Value	The last value for which a label should be printed
Use SQL <u>E</u> xpression	When checked, the SQL expression entered in the SQL Expression box is used to select labels for printing. If this field is checked when start and end values have been specified, those values are converted to an SQL expression.
<u>R</u> eevaluate Auto Counts	When checked, the field value is re-evaluated for every database record. Otherwise, the value for the first database record is used for all labels printed.
<u>S</u> QL Expression	The SQL expression that will be used to select labels for printing
<u>T</u> est Button	Tests the query and returns the number of records found.