

Installing Legitronic Labeling Software 3.5.X

Today's powerful enterprise grade PC's come loaded with Microsoft's Windows XP Professional operating system, or at the very least Microsoft Windows 2000 Professional. Legitronic Labeling Software version 3.5 was designed with these multi-tasking, multi-user professional (as opposed to home versions) operating systems in mind.

What You Will Need

- Windows 2000 Professional or Windows XP Professional - Home editions are not supported
- A license key (dongle)
- Administrative privileges over the PC on which you're installing Legi
- * An ODBC compliant database (MS Access, SQL, etc) and its associated ODBC driver
 - * Only if your formats require database interaction

Install Legitronic Labeling Software

1. Plug your license key (dongle) into the parallel or USB port
2. Log into Windows using an account with administrative privileges.
3. Place the Legitronic Labeling Software CD in the CD ROM drive and let it start. Choose the option to install as a Single User Hardware Key. (Figure 1)

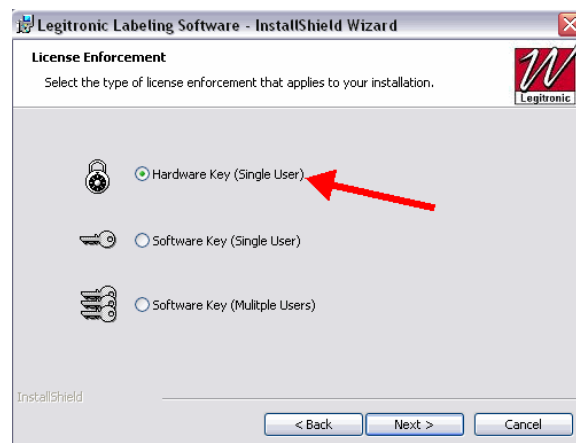


Figure 1

- After Legi is installed, go to the Windows Program Group that the installation created and run the Sentinel Installer program. (Figure 2a-b)



Figure 2a

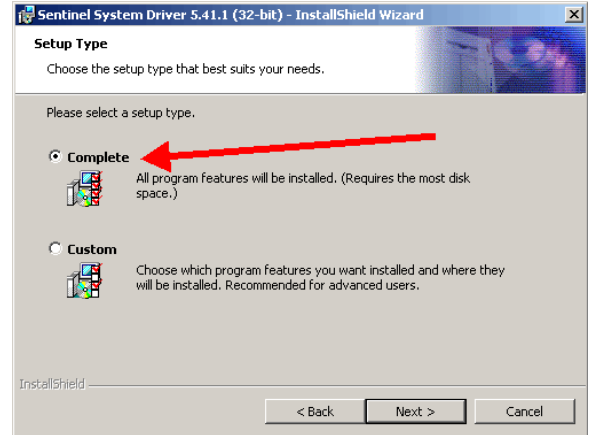


Figure 2b

Install New Printer Drivers

- Log into Windows using an account with administrative privileges.
- Open the Printers area of Windows. (Figure 3)

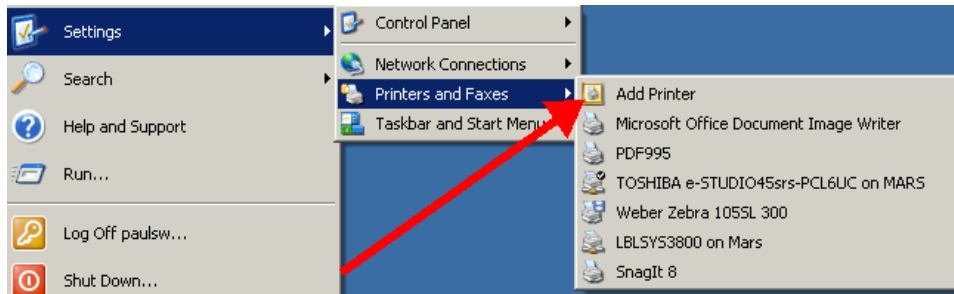


Figure 3

- Click the Add a Printer link and follow the Add a Printer Wizard instructions. (Figure 4)

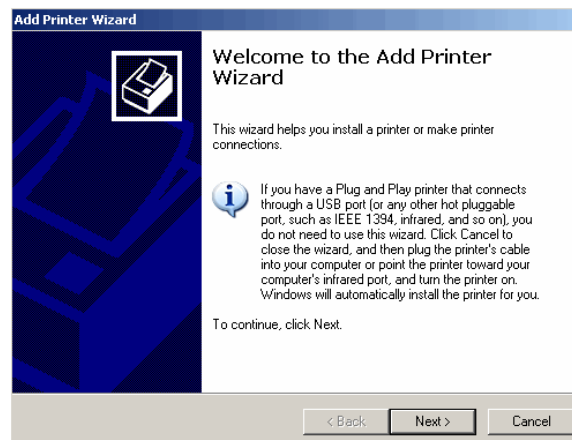


Figure 4

8. Choose the Local Printer option, but UNCHECK the setting that allows Windows to detect Plug and Play devices. (Figure 5)

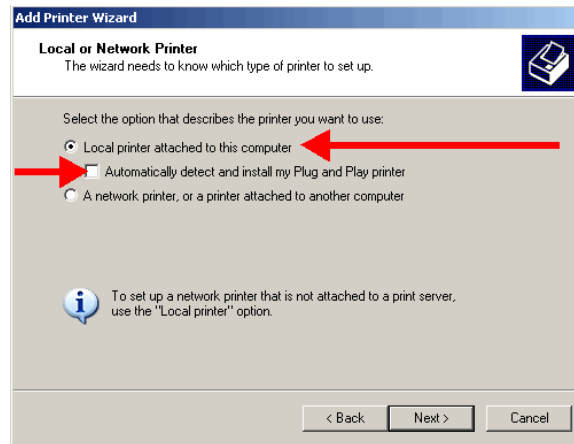


Figure 5

9. Direct the printer to the port where it is installed. (Figure 6)
NOTE: If using a networked printer contact your Network Administrator.

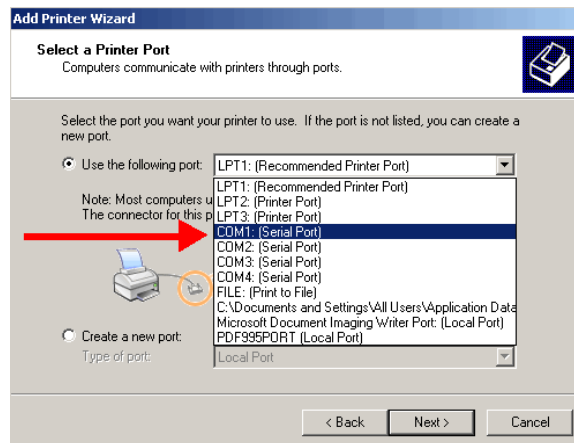


Figure 6

10. Click the Have Disk button when the list of manufacturers and printers on the Install Printer Software window comes up. (Figure 7)

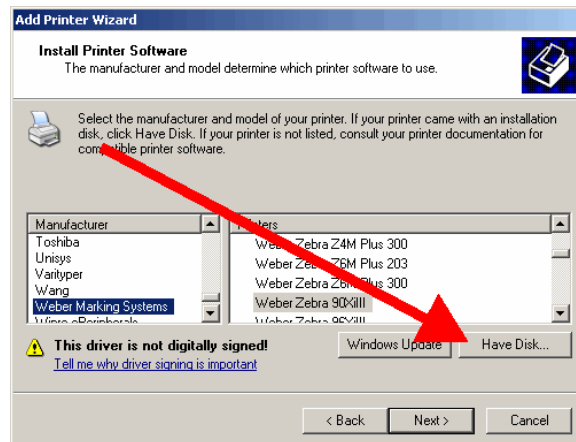


Figure 7

11. Click the Browse button on the Install from Disk window. (Figure 8)

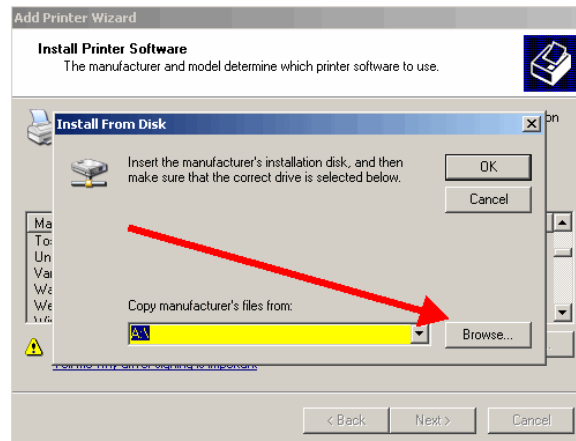


Figure 8

Browse to C:\Program Files\Weber Marking Systems\Legitronic Labeling Software\Printer Drivers\Windows-NT-2000-XP\English folder. (Figure 9)

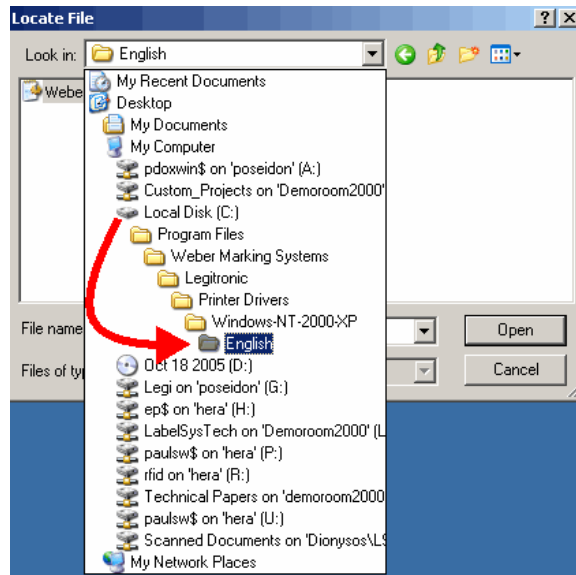


Figure 9

12. Double-click on WeberNT.inf. (Figure 10)

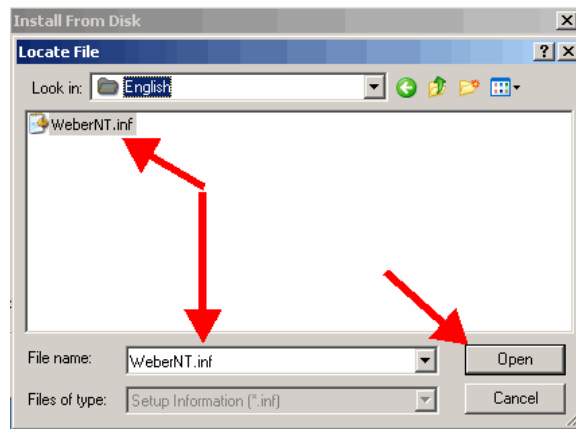


Figure 10

13. Click OK on the Install from Disk window. (Figure 11)

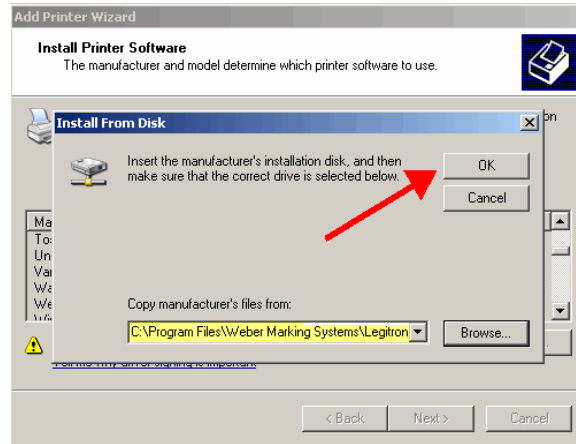


Figure 11

14. Scroll through the list of printers and highlight the model to install. (Figure 12)

15. Click Next. (Figure 12)

NOTE: If asked to replace or keep the existing driver, choose replace.

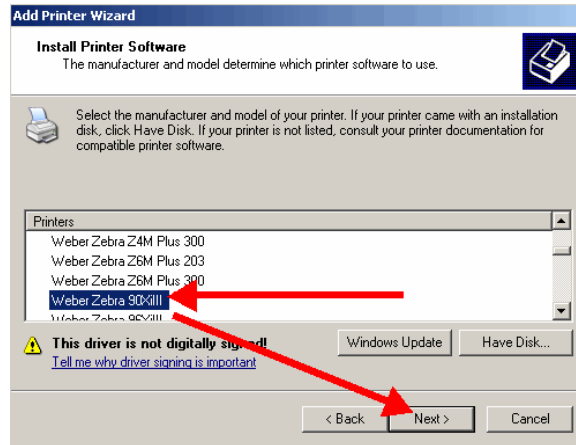


Figure 12

16. Continue through the Add a Printer Wizard.

17. Choose No to Default Printer, Share Printer and Print a Test Page. (Figure 13a, b, c)

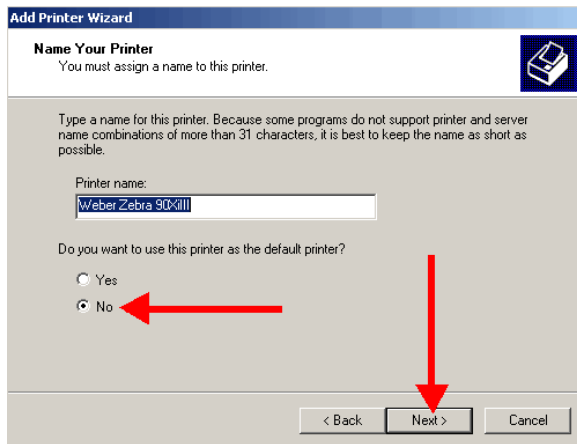


Figure 13a

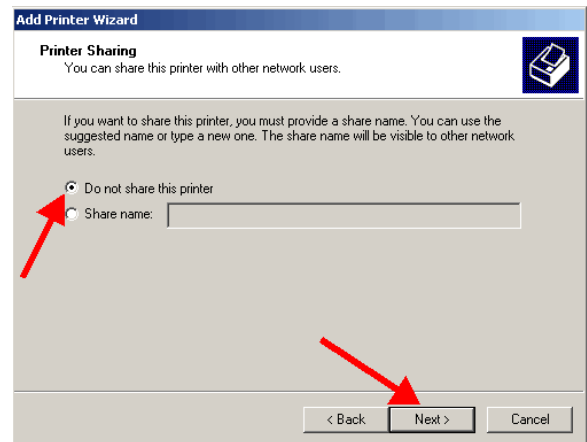
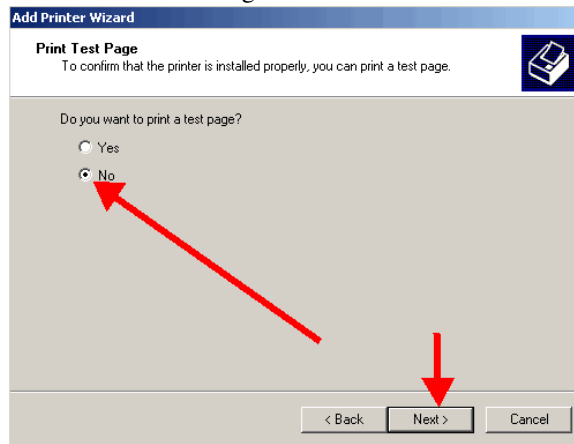


Figure 13b

Figure 13c



18. Click Finish to complete the Add Printer Wizard. (Figure 14)

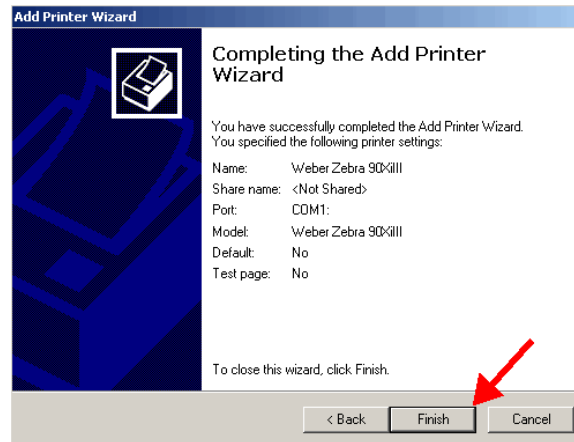


Figure 14

19. Choose Continue Anyway to the Windows Certification warning.(Figure 15)

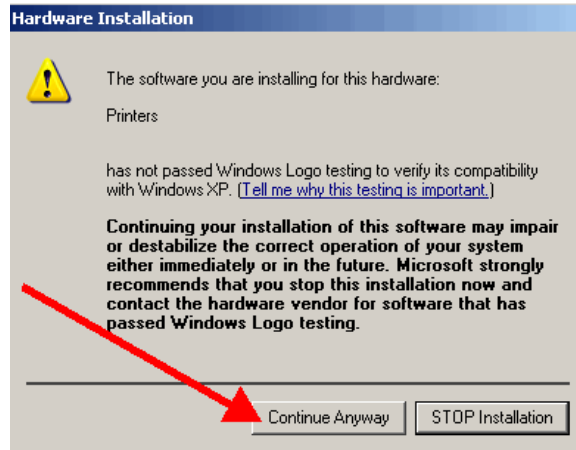


Figure 15

20. Right-click on the newly installed printer.

21. Choose Properties from the quick-pick menu. (Figure 16)

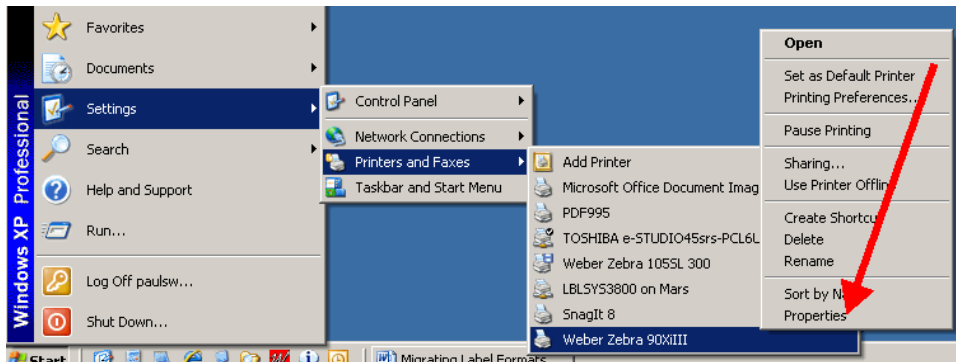


Figure 16

22. Click on the Ports tab.(Figure 17)

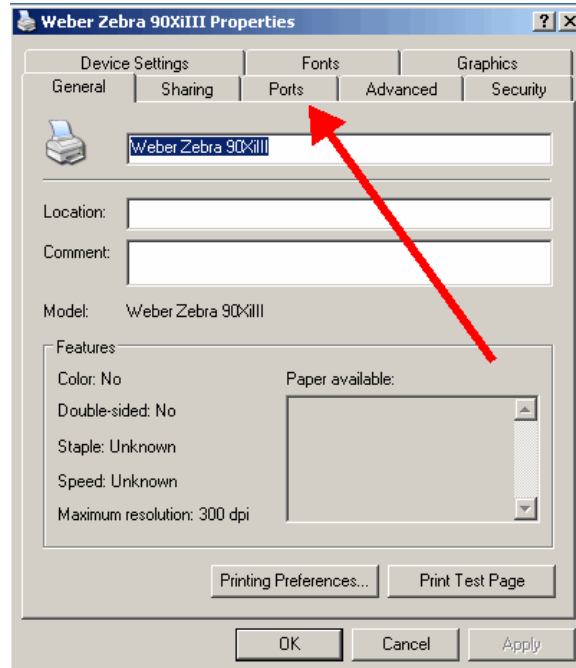


Figure 17

23. **Uncheck** the Enable Bidirectional Support option (near the lower left) UNLESS your printer is USB enabled. (Figure 18)

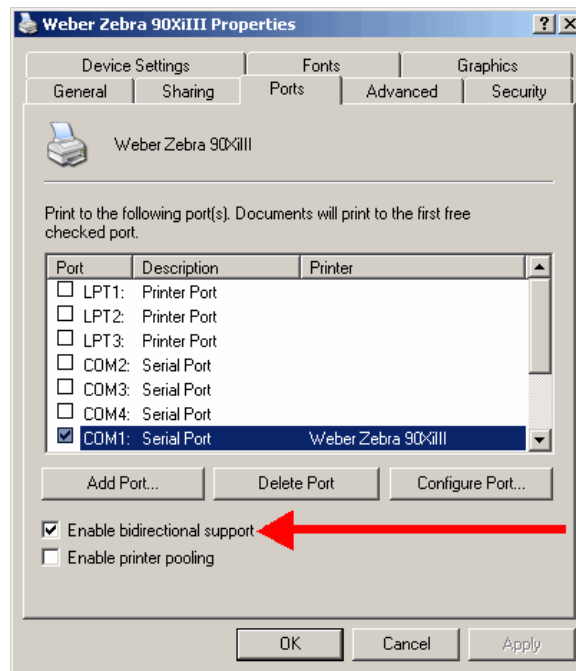


Figure 18

NOTE: If you need to make changes to your port settings click on the Configure Port button. (Figure 19a, b) Ask your IS department if such changes are needed. (The recommended COM1 settings are shown)

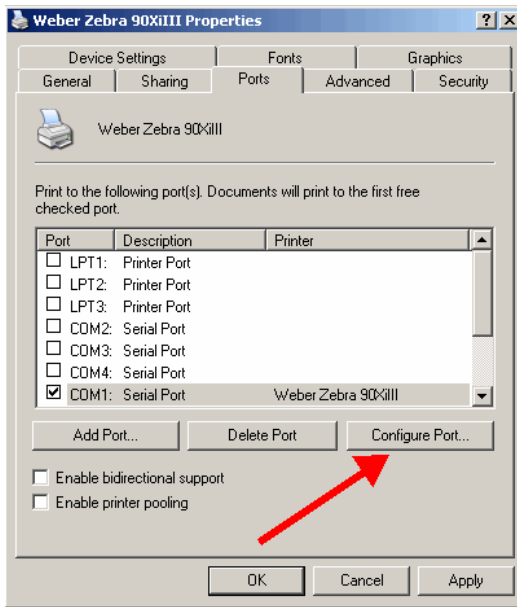


Figure 19a

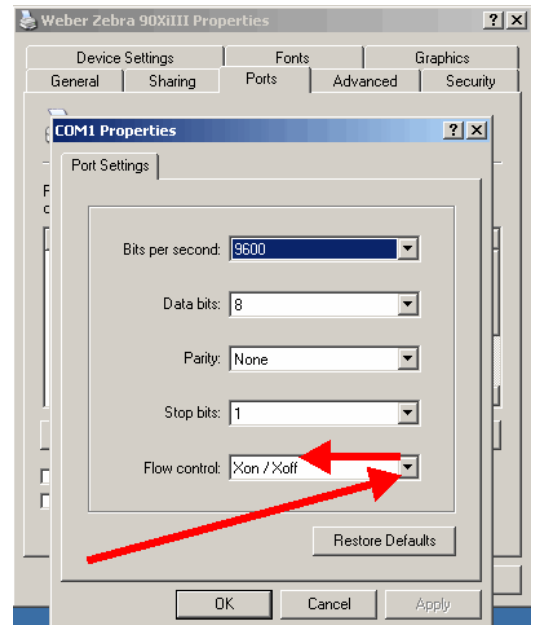


Figure 19b

24. Click on the Device Settings tab. (Figure 20)

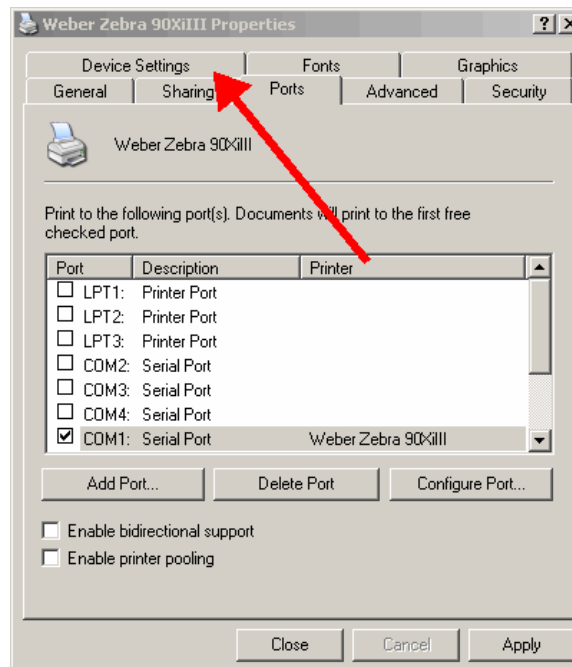


Figure 20

25. Click on the Properties button for the Setup Label Size option. (Figure 21)

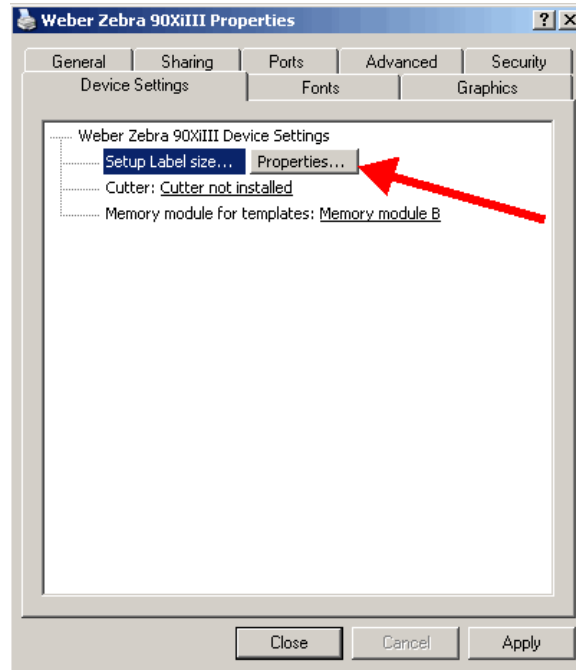


Figure 21

26. Change the label settings from the existing values to 20 inches by 20 inches, (Figure 22a, b) and click OK.

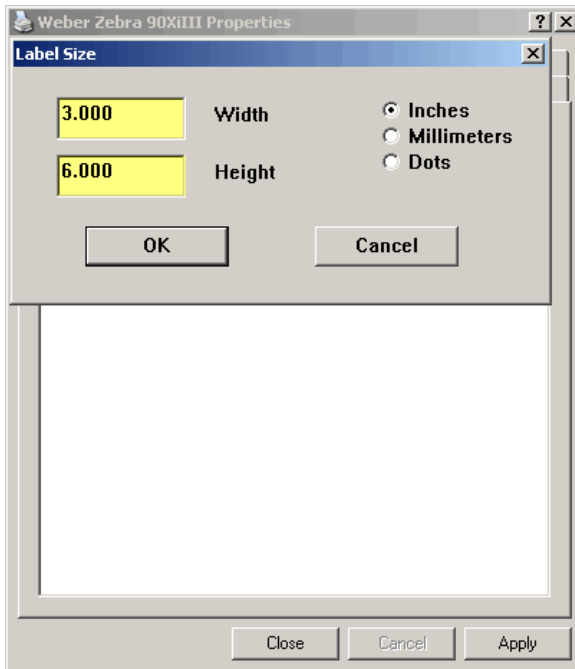


Figure 22a

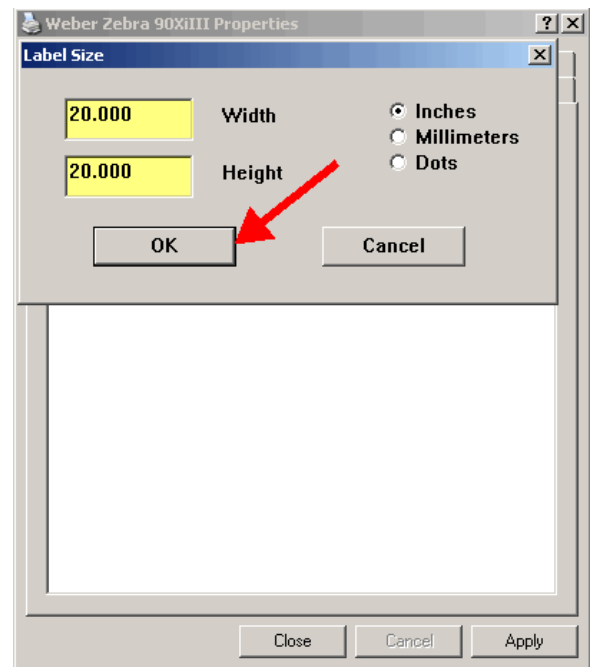


Figure 22b

27. Click Close to finish setting up your printer. (Figure 23)

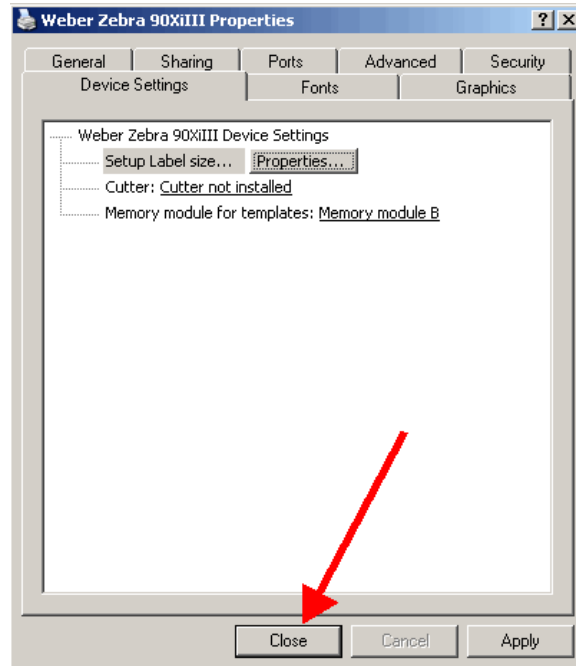


Figure 23

Your Legitronic Labeling software is installed and ready to use.

**If you have any questions about the material covered in this document,
please call Labeling Systems at 847.364.8500 ext 773**