

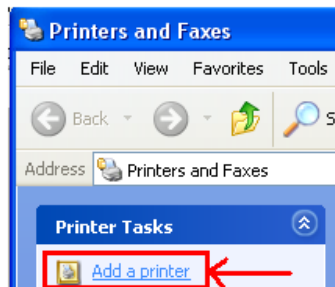
INSTRUCTIONS ON “HOW TO” HOOK UP PRINTERS VIA USB

IT IS VERY IMPORTANT TO FOLLOW THE ORDERING PROCESS OF THESE STEPS TO CORRECTLY CONFIGURE A PRINTER VIA USB.

- 1.) Turn on Computer- and startup Windows
- 2.) Keep Printer(s) **turned-off** for these first steps (*you may have them attached via USB, but keep the printer(s) turned off before you get to “Step 5” in our instructions.*)
- 3.) Install our Legi software & security module(HW-key/or/SW-key)...per our Legi Installation Manual.
- 4.) You will need to install our “**Weber(ZEBRA/ SATO/ DATAMAX)” Printer drivers** on any LPT(parallel)/COM(serial)/FILE(to print to file) port first.

Port	Description
<input type="checkbox"/> LPT1:	Printer Port
<input type="checkbox"/> COM1:	Serial Port
<input type="checkbox"/> FILE:	Print to File

You will need to go to **Start**→ **Printer & Faxes**→click on “Add a Printer”



<REFER TO OUR [EXISTING DOCUMENT ON HOW TO INSTALL A PRINT DRIVER FOR LEGI F](#)>

NOTE: Installing to one of these ports first will act as a place holder for the driver.

NEXT:

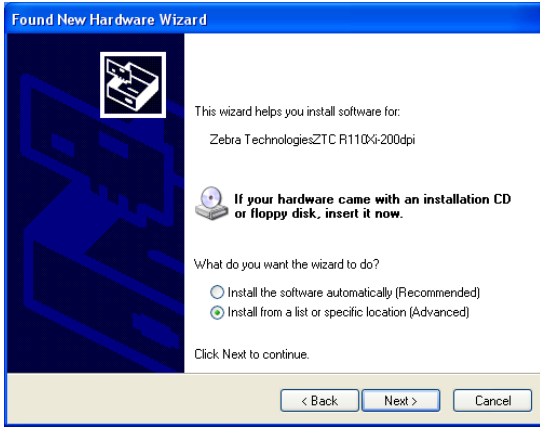
- 5.) Make sure your printer is connected via USB and **NOW** you may **turn on** your **printer** for “**WINDOWS – PLUG&PLAY**” to detect it.

<**PLEASE NOTE THE FOLLOWING SELECTIONS TO THESE SETUP QUESTIONS ARE MPORTANT:**>

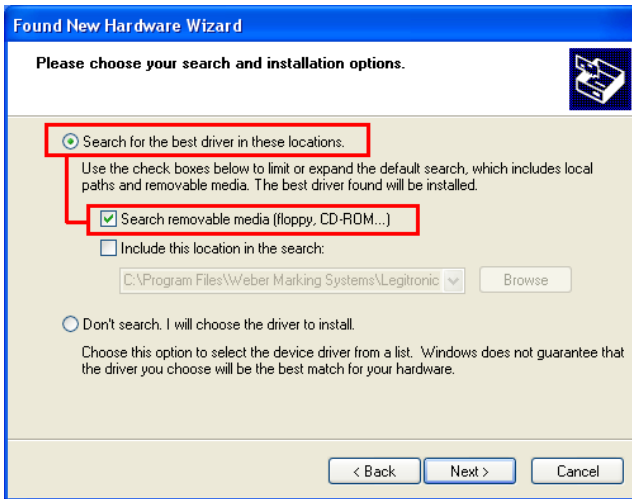
- 6.) Plug&Play found the Printer



Select “Yes” to this time only.

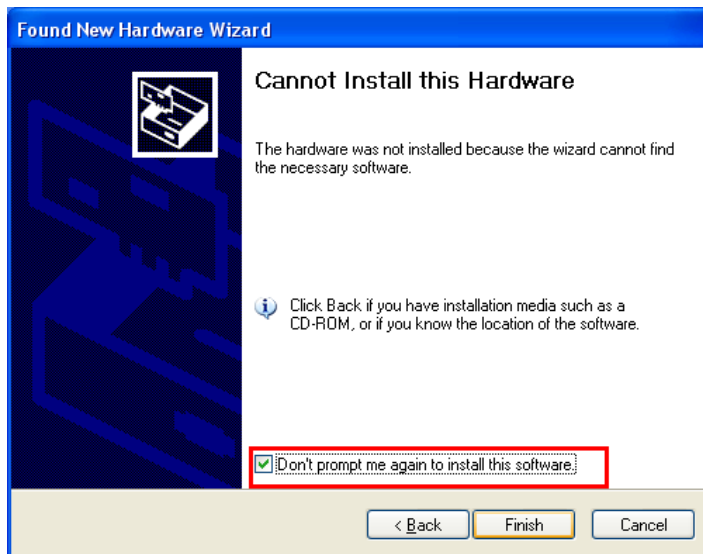


Install from a “Specific Location”



Select – to Search for files on removable drive(a:\, c:\ or CDROM)on your computer – “specific location only”.

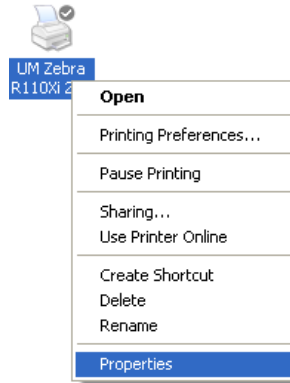
The Plug & Play will search the PC and “not” find any driver software (this is OK).



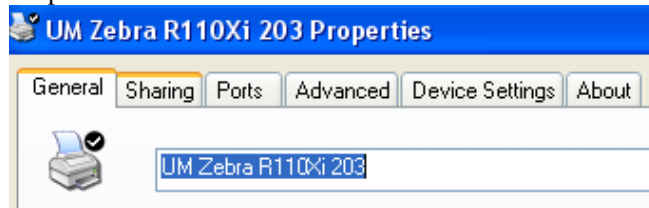
Checkbox/Select “Don’t Prompt me again to install” (this is important so you eliminate the constant “Windows Plug&Play” msg of “detecting a plug & play devise...do you wish to install”).

7.) Next go to your “Printers & Faxes” (Start→ Printer & Faxes)

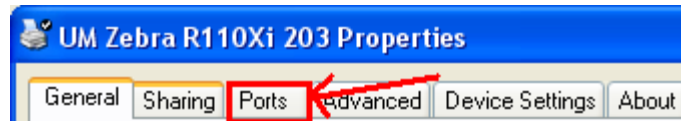
Do a “right-click” & select “properties” on the print driver you installed to a parallel/serial/file port “place holder”.



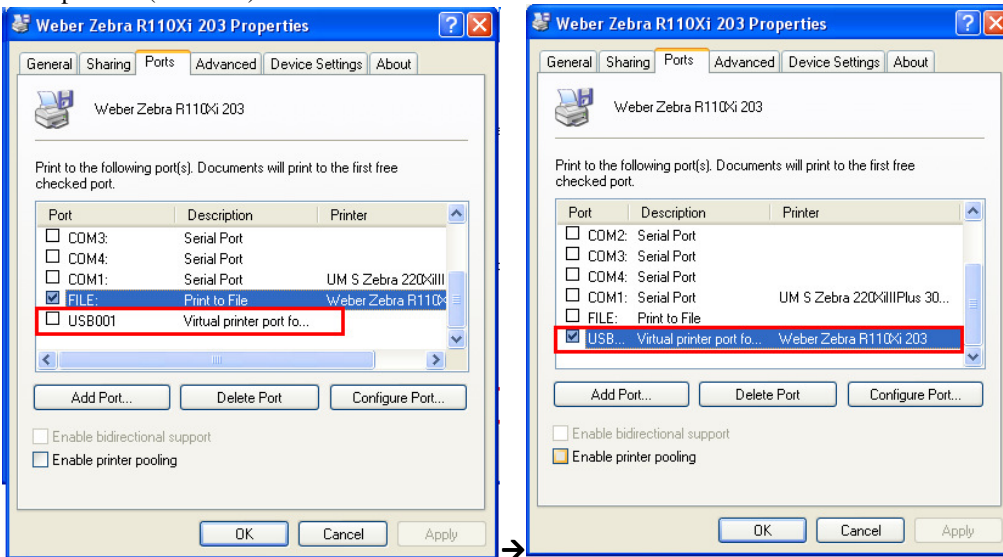
This will bring up the “properties” window for the printer:



Click on the “Port” Tab .



NOW we can change the “PORTS” “place holder port setting(LPT,COM,FILE)” to be the recently added USB port of (USB001).



The setup of 1 USB printer is complete.