
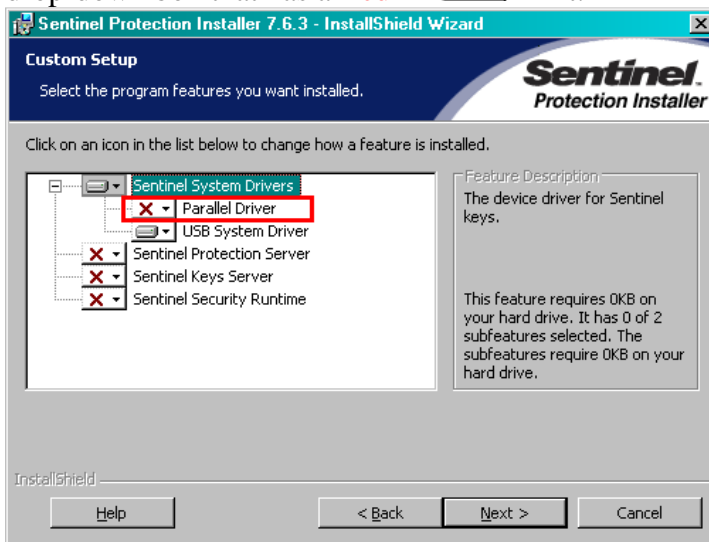


## How to Install Parallel Dongle Sentinel license driver for Legi v3.6.6

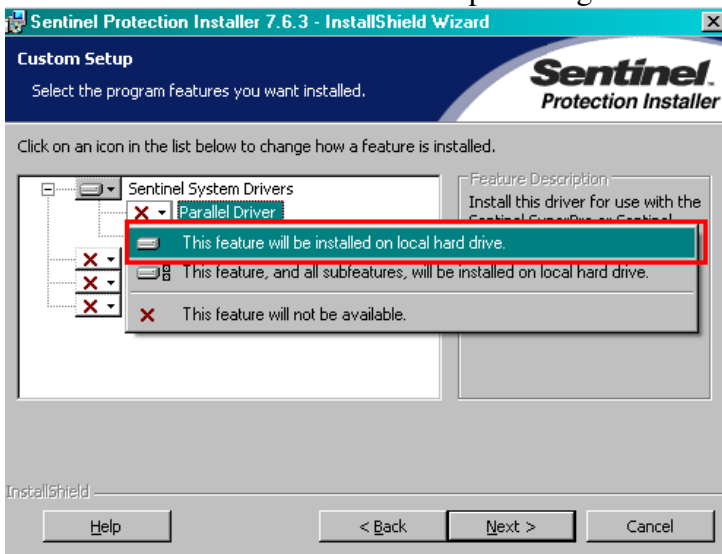
On the Installation CD or from your Downloaded copy of Legitronic Software files, you will need to go to the **Sentinel folder** to launch the Sentinel's **Setup.exe** file directly.


**D:\sentinel driver\setup.exe** → 

When you get to the following screen you will need to click on the “Parallel Driver” drop-down box that has a **Red X**  in it.



Select/Click on “**This feature will be installed on local hard drive**” to enable the install for the Sentinel driver for a Parallel port dongle license key.



Once this selection is made, you will notice that the “Red X”  is removed next to the “Parallel Driver”. **Select/Click** on the “**Next**” **Button** below and this will install the Sentinel driver for a Parallel Port Dongle License hardware key.

