

Changing the Default Label Size in Legitronic Labeling Software Printer

1. Log into Windows using an account with administrative privileges.
2. Open the Printers area of Windows. (Figure 1)

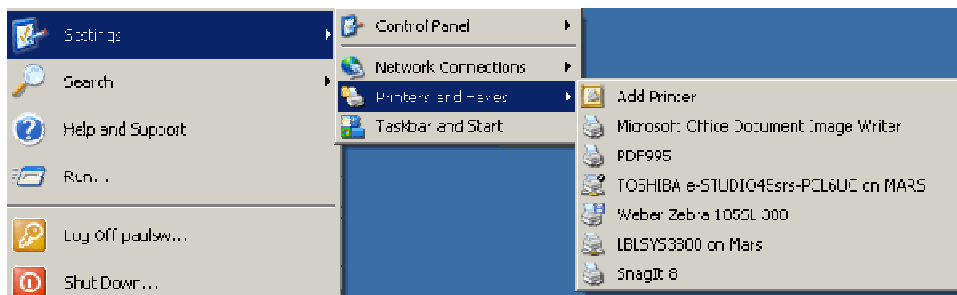


Figure 1

3. Right-click on the printer.
4. Choose Properties from the quick-pick menu. (Figure 2)

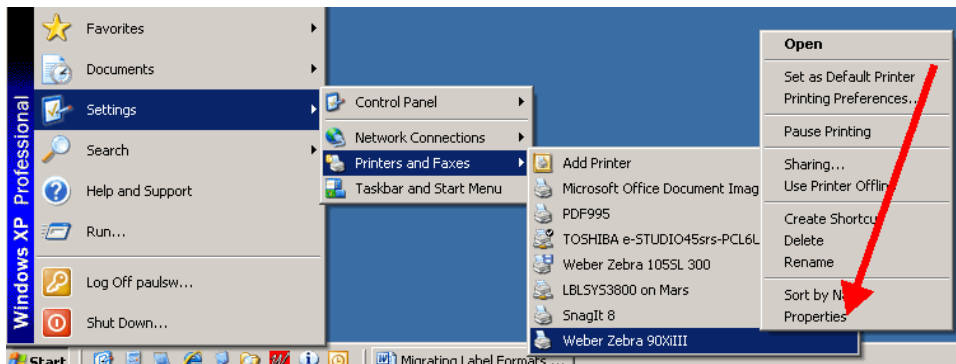


Figure 2

5. Click on the Device Settings tab. (Figure 3)

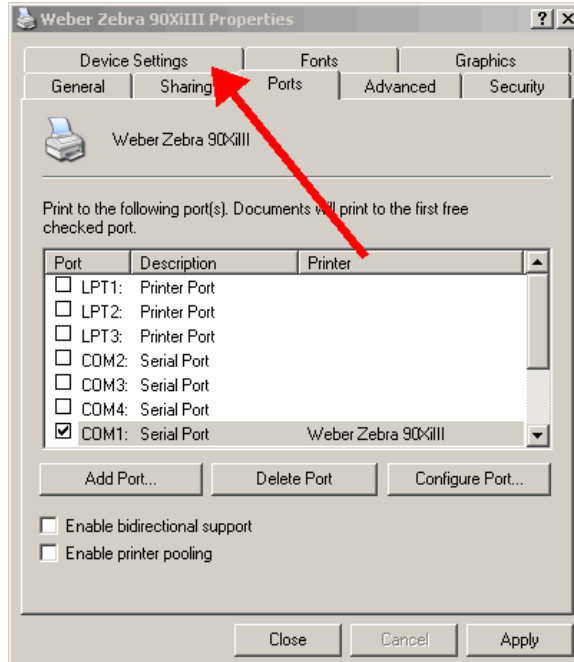


Figure 3

6. Click on the Properties button for the Setup Label Size option. (Figure 4)

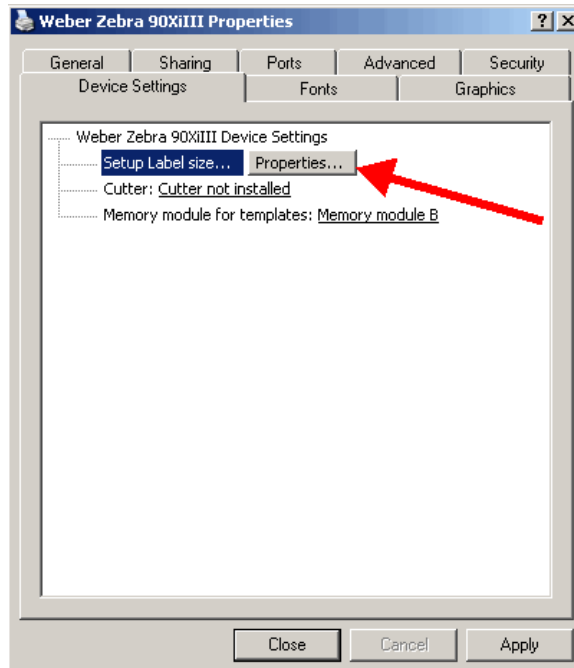


Figure 4

7. Change the label settings from the existing values to 20 inches by 20 inches, (Figure 5a, b) and click OK.

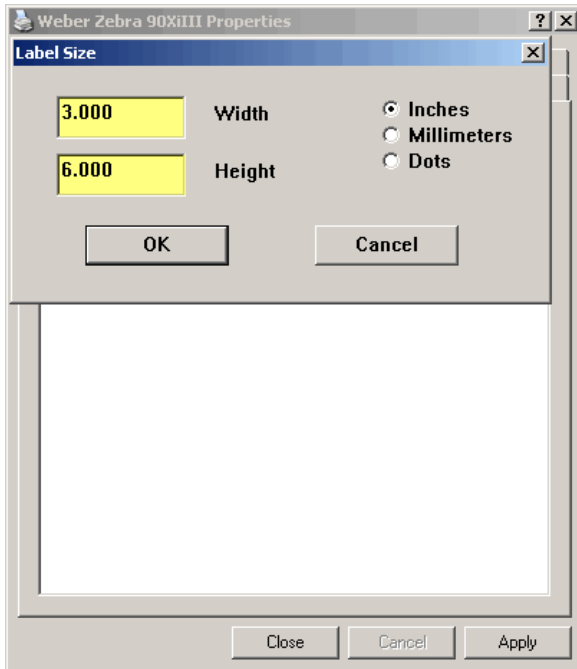


Figure 5a

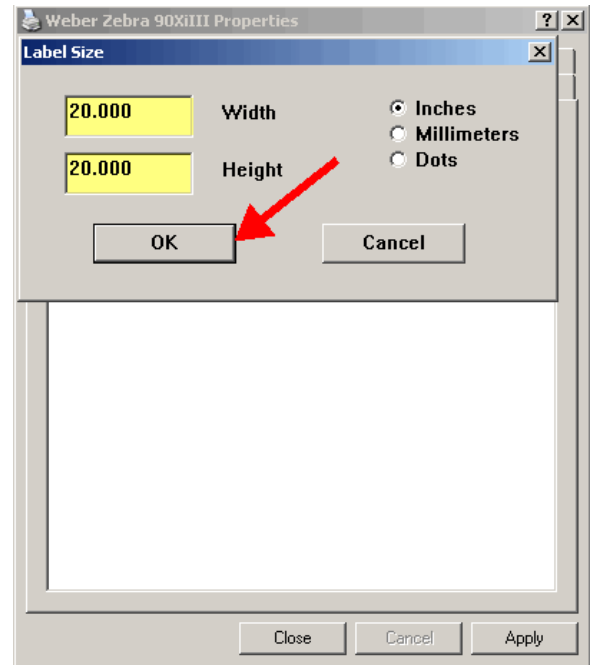


Figure 5b

8. Click Close to finish setting up your printer. (Figure 6)

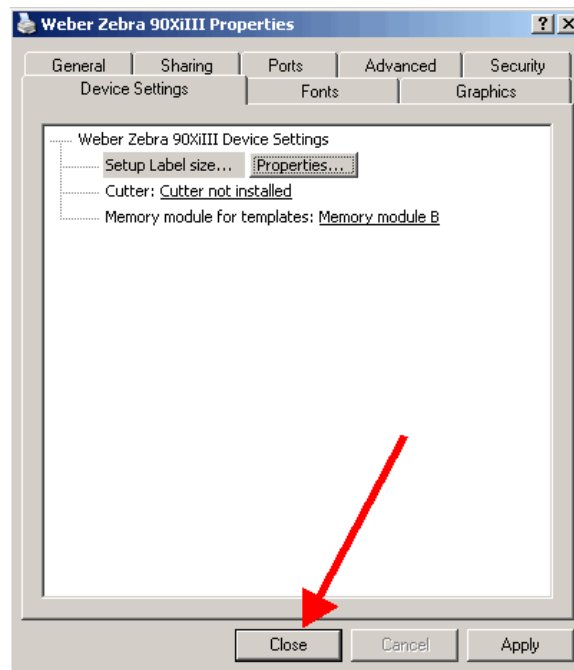


Figure 6